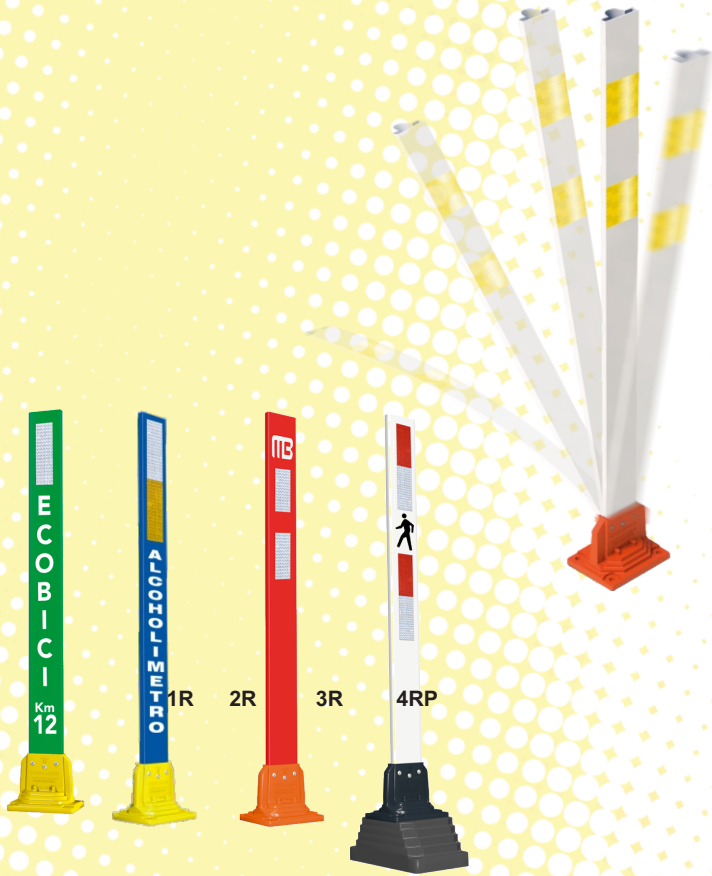




Leader don't follow steps
... marks the way



Features:

- Flexible Post.
- Designed to be high resistant to vehicle impacts.
- Special use for limit, signalise and confine areas or to open new deviations.
- The post rebounds always its vertical position.
- Made out in Poliflex®, a soft and reliable material harmless to persons or vehicles.
- Easy installation and restock.
- With two engineering grade reflective bands each 2.36 x 3.93 in. or two high intensity reflectives to get more visibility during nights.
- Three rivets to reinforce a good floor fixing.

Anchorage System:

- 4 "Extralarge" tackets Ø 0.7 in. x 5.31 in.
- 4 "Ultrafix" screw hex head 21 v Ø 3/8" x 5.9 in.
- 4 galvanized plane washers
- The heavy base option makes device more portable, and unnecessary to fix on floor.

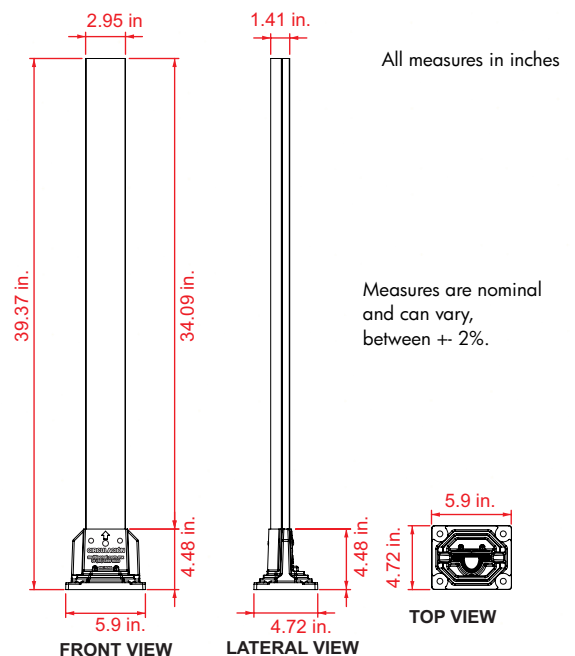
Technical Data:

- * **Manufactured in:** Poliflexy® post.
- * **Color:** White, orange, blue, green
- * **General Measure:** Height: 39.37 in., Base width : 4.72 in.
Base length: 5.9 in.
- * **Total Weight:** 19,75 oz.

Base

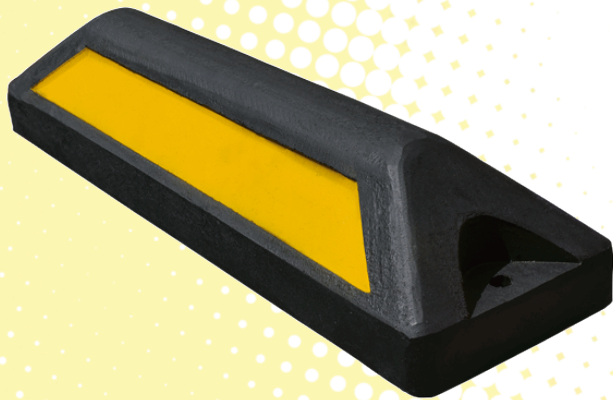
- * **Manufactured in:** Poliflexy®.
- * **Color:** Black, orange, yellow

PAT. PENDING





Leader don't follow steps
... marks the way



Features

- Useful Bicycle Delimiter also known as Parking Lot Stopper
- Manufactured in Polimeric Fussion, guarantee of durability.
- 100% recycled plastic.
- In one-piece molded
- UV. ray protection.
- This device is all weather resistant and immune to oily sustances, corrosion and else.
- Effective into the protected bicycle lane equipment to mark limits.
- Rounded corners and edges for a very safe product harmless to persons and vehicles
- Great visibility as its big reflectives lateral strips to be perceived from a very long distance also you can paint it.
- Anchorage to floor with extralarge expansive tacket or steel nail (not included).

Technical Data:

Manufactured: Polymer Fussion.

Measures:

Length: 21.65 in.

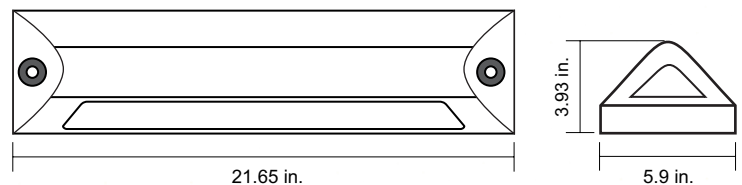
Height: 10 cm.

Width: 15 cm.

Colors: Black

Peso: 142,68 oz.

Volumes, dimensions and other measures are nominal and can vary between + - 2%.





Leader don't follow steps
... marks the way



WHAT IS A DEFENDER POST?

Permanent preventive signal, a flexible post with cylindrical body and with a good effective record as marker due to its height on-driver-eyes.

WHAT A DEFENDER POST DO?

An economic and effective device to indicate a risk situation, for limit specific areas or to signalise restricted security zones.

RECOMMENDED USES

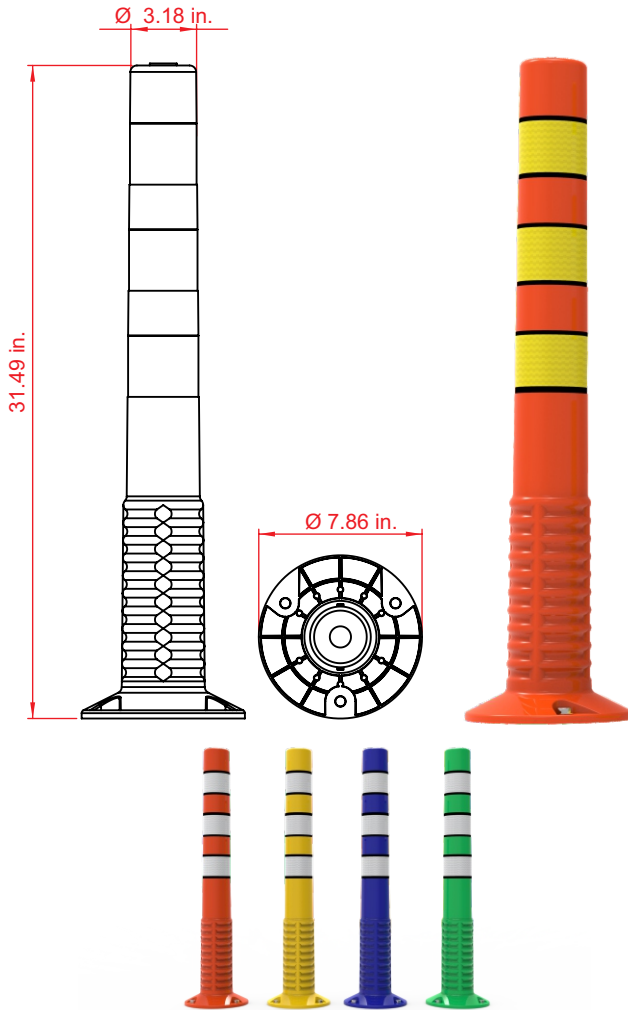
Useful in road works, parking lots, hospitals, deviations, for create protect bicycle lane.

Features

- It can install alone, in group or forming rows or as a complement with another device.
- Manufactured in one piece, is a vehicle impact resistant due its flexibility.
- The most important feature is reboundable after numerous run-ins recovering its vertical.
- Composed in Poliflexy®, our exclusive registered material soft and totally harmless to persons, fauna or vehicles.
- The Defender Post body line colors are orange, blue, green and yellow (white in solar models). Other colors on demand.
- Three reflective rings prismatic grade with black fillet made this device an excellent visible traffic limiter.
- Easy installation and re-position.
-
- **SOLAR POWER INTELLIGENT SYSTEM**
- Solar charging by photocells during day hours.
- Auto turn on/off by sensor.
- 5 ultrabright LED cluster
- 40,000 MCD, with low current 18,000 mA y 40,000 mW.
- Led Colors: Amber, red, Body Color: White
- Its body color, lights and reflectives means extra visibility and safety at your service.



Measures are nominal and can vary, between +- 2%

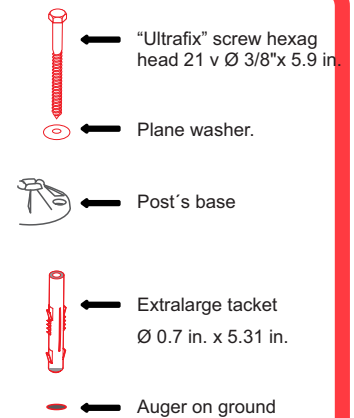


Measure

Total	Superior Diameter: 3.18 in Inferior Diameter: 7.87 in. Height: 31.49 in.
Reflectives:	3 rings prismatic grade
Reflective color:	White or amber

Anchorage System

Mark the three holes on ground for place post's base. Then perforate with a 3/4" drill bit down to a 7" depth. Once the holes are correct introduce the tacketts and place the **80 Defender Post**, settle screws with the 3/8" plane washers. Wrist them with a 9/16" nut socket and your traffic post its ready on site.



On cement road

- "Ultrafix" screw hexagonal head 21 v Ø 3/8" x 5.9 in.
- "Extralarge" tackett Ø 0.7 x 5.31 in.