

Leader don't follow steps
... marks the way

WHAT IS THE MAXIBUTTON RUMBLER?

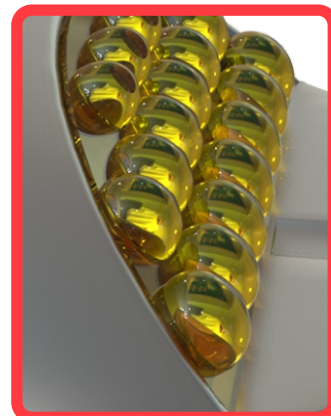
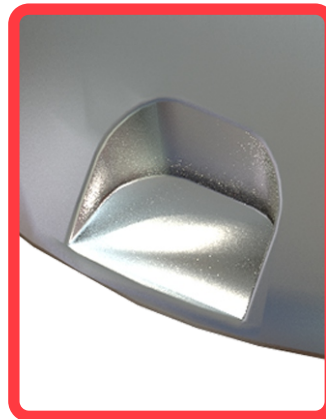
- Buttons or Cat Eyes are retro-reflectives markers developed for channelize the way in an effective form on different conditions and places: parking lots, low visibility zones or to take drivers to specific area.
- Put them on floor to channelize vehicle traffic, made indications, or as a speed reducers, rumpblers and for distribute lanes.
- Are necessary, practic and discret items, buttons doesn't cause distractions to drivers and don't take out their sight apart from the way, but they made an attention call with its reflectives.
- Reflectives are based on glass spheres providing more visibility during darkest night.
- Very useful in pedestrians zones, croosing, simple turns and for draw and delimit parking lots.

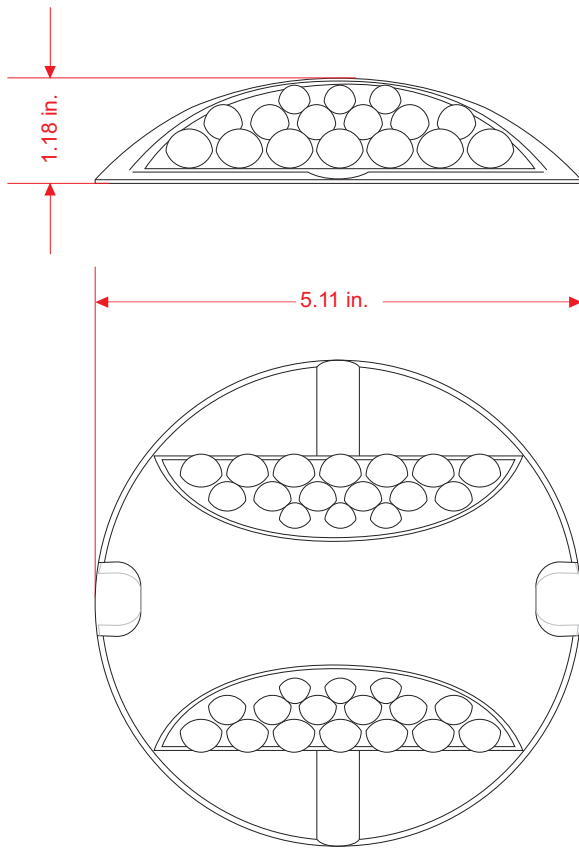


Images are merely illustrative models.

FEATURES

- Manufactured out in 380.2 natural color aluminium.
- It has 16 acrylic reflective spheres both on front or rear faces according your needs, if the road runs two or single way and it can be installed on any roadway.
- It resists crowded crossings and also every vehicle type run-in, from bicycles to trailers without rip or deformation.
- Thanks to its materials and manufacturation methods are a long durable device.
- Atrition, friction, weight, humidity and rain resistant.
- Has an ABS bolt option for a better floor fixation.
- In case of torn apart, the bolt doesn't harm tires. Also the bolt is unbreakable.
- Easy to install with two-element epoxic glue, this glue is also heavy resistant to temperature changes and physical or chemical agents.





Measure

Button

- * **Diameter & Height:** Ø 5.11 in./ 1,18 in.
- * **Color:** Natural metal polished.
- * **Friction resistance:** 50 times over plastic.

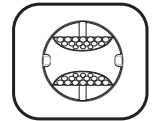
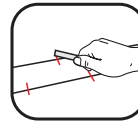
Spheres

- * **Manufactured in:** Acrylic with thermic hardener process.
- * **Width:** : 32,28 in.
- * **Color :** Amber, white, red, blue.

installation procedure

Installing must be hand-made with the recommended epoxic glue

- 1- Prepare the surface. Most be clean and dry. Mark installation site in a triangular pitch scheme of 10 inches.
- 2- Put epoxic glue on all the button's reverse surface (3.5 oz aprox.).
- 3- Place the button and press it (Pressing is important for a strong fixation).
- 4- Other installation way implies fixing with glue and with a bolt. In that case perforate floor with a 1/2" bit drill to a 3" depth. Go to step 2.
- 5- Dry time is about two hours.



NOTE: DIRECTIONS FOR PREPARING TWO COMPONENTS EPOXIC GLUE

TAKE SIMILAR QUANTITIES OF
BOTH COMPONENTS
"A" + "B".

MAKE A HOMOGENEOUS MIX.

ATTENTION:

LEFTOVERS OF EPOXIC GLUE
MUST BE CASTAWAY,
IS FOR ONE TIME USE ONLY