

Leader don't follow steps
... marks the way



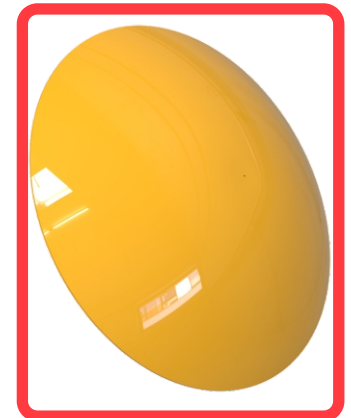
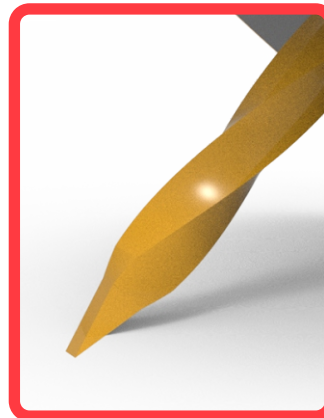
WHAT IS A BUTTON?

- Buttons or Cat Eyes are retro-reflectives markers for traffic on different conditions: parking lots, low visibility zones or for a guide to users.
- We put them on floor to channelize vehicle traffic, made indications, or as a speed reducers, rumblers and for distribute lanes. Is a so necessary, practic and discret item. Buttons doesn't cause distractions to drivers and don't take out their sight apart from the way, but they made an attention call with its reflectives.
- In this case the reflective material are spheres that brights in darkness, so the device has better visibility during night hours, when accidents can be worse.
- Buttons represent 6 times savings in cost of thermoplastic painting each year.
- Buttons also means 50% of savings in time and material.
- This is part of the for-bicycle-tracks engineered equipment we produce proudly and also give good service in parking lots, pedestrian zones and else.

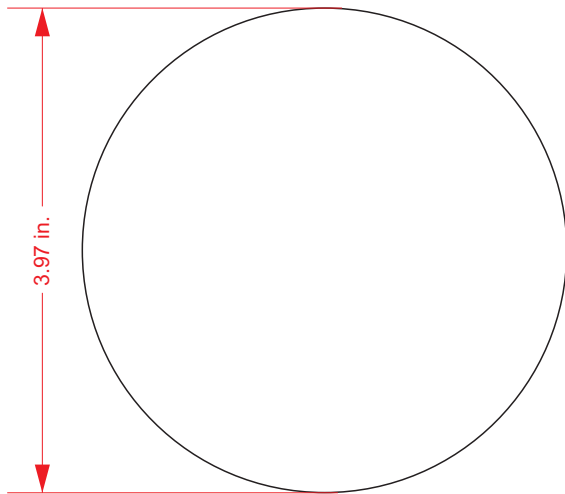
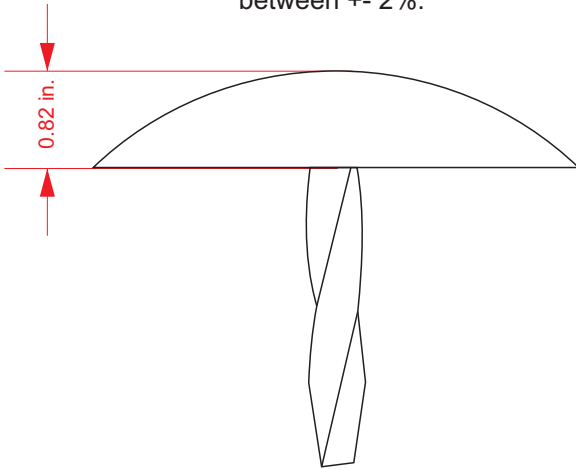
FEATURES

- Non-deformable body in one piece steel molded -with an ABS bolt included-.
- It is a smooth button without edges and corners, so doesn't harm tires or cars.
- Thanks to its material and production methods resists impacts, friction and abbrasion from car tires and buses.
- Immovable to any type of vehicle run-in, from bicycles to trucks, without ripping or loose form.
- Excellent as a speed reducer in schools, pedestrians zones, hospitals and else.
- They are easy to install and do no need any maintenance.
- Easy to install with two-element epoxic glue, this glue is also heavy resistant to temperature changes and physical or chemical agents, also is an excellent adhesive and is long durable.
- Can be fit on any type or ground, pavement or cement.

Images are merely
illustrative models.



Measures are nominal and can vary, between +/- 2%.



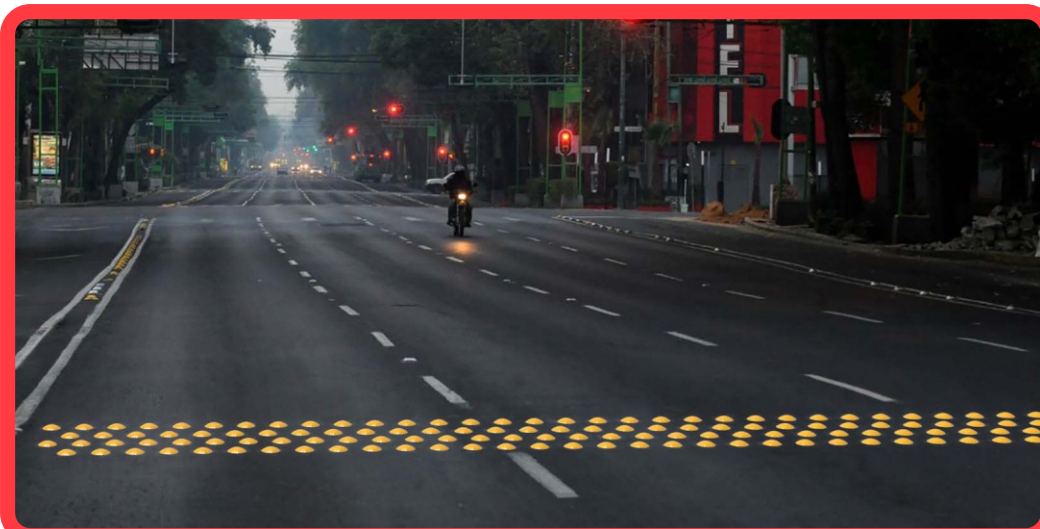
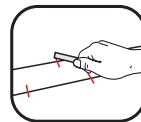
Measure

Total	Diameter: 3.97 in. Height: 0.78 in
Reflective:	No
Color:	traffic yellow

installation procedure

Installing must be hand made with recommended epoxic glue

- 1- Prepare the surface. Most be clean and dry. Mark the site of installation in a triangular pitch scheme of 10 inches.
- 2- Put epoxic glue in all the surface of the button's reverse (3.5 oz aprox.).
- 3- Place the button and press it. This is an important step for strong fixation.
- 4- The other installation way is fixing with glue and a bolt. In this case perforate floor with a 1/2" bit drill to a 3" depth. Go to step 2.
- 5- Dry time for glue fixation in almost two hours.



NOTE: DIRECTIONS FOR PREPARING TWO COMPONENTS EPOXIC GLUE

TAKE SIMILAR QUANTITIES OF BOTH COMPONENTS "A" + "B".

MAKE A HOMOGENEOUS MIX.

ATTENTION:

LEFTOVERS OF EPOXIC GLUE MOST BE CASTAWAY, IS FOR ONE TIME USE ONLY