

True leaders do not follow  
...they lead the way



## WHAT IS AN ABSORB?

Impact-absorbing system with modular design, optimized for superior energy absorption. Fully traversable, it eliminates vehicle deflection or rebound.

## WHAT IS IT FOR?

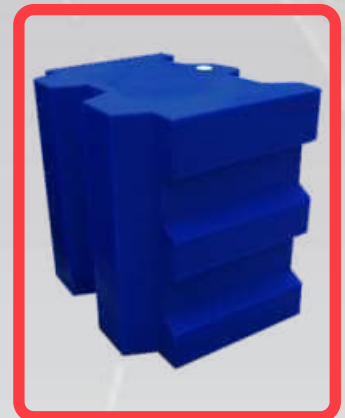
- Filled with water: designed to absorb minor collisions.
- Filled with sand: provides protection against more severe frontal impacts.

## PURPOSE

Perfect for use as an impact attenuator on urban roads and highways, particularly suitable for high-risk zones including gore areas, detours, and junctions.

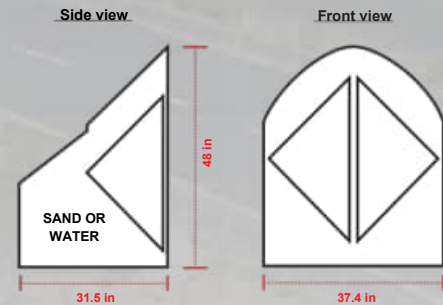
## Features

- In minor collisions, the device regains its original shape; under stronger impacts, it efficiently absorbs crash energy.
- Its operation is based on three configurations:
  - *Impactor*: Recommended for streets with low traffic flow.
  - *Impactor + Module 1*: Suitable for higher-traffic road sections.
  - *Impactor + Module 1 + Universal Module*: Provides greater impact coverage, expandable up to 6 modules depending on road risk level.
- It is manufactured in one-piece solid structures.
- Available in yellow, blue, or green.
- The system is self-refilling with rainwater through a top cap.
- Includes a bottom cap for easy draining.
- Ensures high resistance to weather and UV rays.
- The device is fully traversable.
- **Complies with NOM-008-SCT2-2013.**
- Equipped at the front with two prismatic engineering reflective arrows for improved visibility at night or in low-light areas.
- One day of solar charge: up to 36 hours of flashing operation.
- Automatic system: turns on at dusk and off at dawn.
- High-capacity battery: ensures up to 36 hours of continuous use after a full charge.

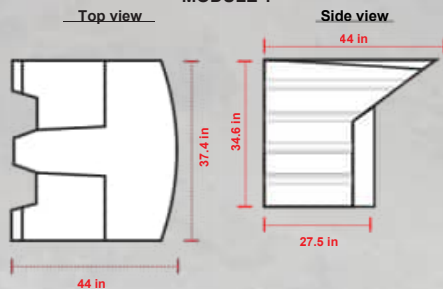


Volumes, dimensions and other measurements are nominal and may vary by  $\pm 2\%$

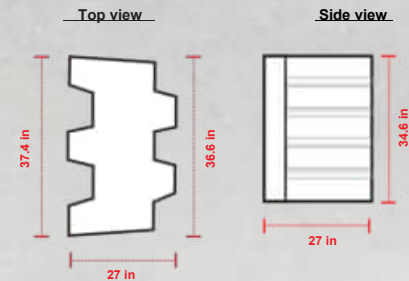
## IMPACTOR



## MODULE 1



## UNIVERSAL MODULE



## Features

|                                      |  |
|--------------------------------------|--|
| * Impactor dimensions:               | Length: 31.5 in, Width: 37.4 in<br>Height: 44 in |
| * Reflective (optional):             | Prismatic engineering                            |
| * Reflective color:                  | White  |
| * Impactor weight (empty):           | 66 lb  |
| * Module 1 weight (empty):           | 79 lb  |
| * Universal Module weight (empty):   | 66 lb  |
| * Impactor filling capacity:         | 101 gal  |
| * Module 1 filling capacity:         | 75 gal   |
| * Universal Module filling capacity: | 68 gal   |

## IMPACT ABSORPTION LEVELS WITH WATER-FILLED CONFIGURATION

