

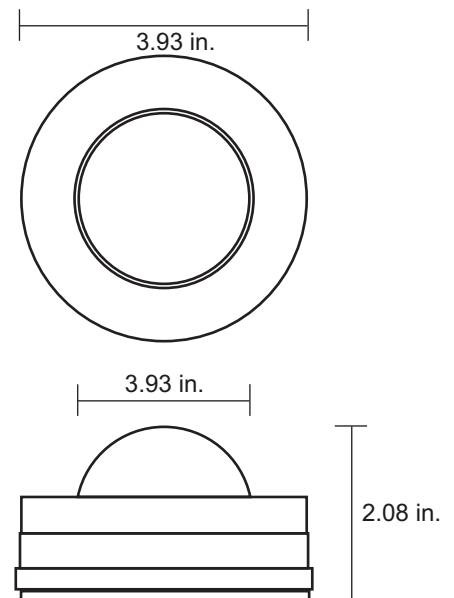
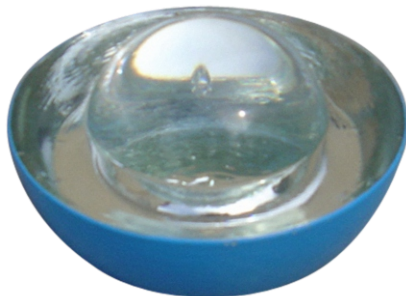
A leader doesn't follow steps, **he marks the way.**

FEATURES

- * This tempered glass road stud doesn't scratch easily but can break with just one great hit.
- * Transparent.
- * Since its reflectivity makes it visible from any side, it reflects like no other.
- * It's a high-demand road element since it's perfect to light up highways, delimit lanes, or as a speed hump.
- * Since it can be embedded in concrete, concrete barriers, or asphalt, it's easy to install.
- * Weather-resistant.
- * The road stud material is thermal tempered glass which means that in case of rupture, it breaks into small and inoffensive pieces making it 100% safe.



Images are merely illustrative.



Technical Specifications:

- | | |
|---------------------|---------------------------------------|
| * Material: | Thermal tempered silica glass. |
| * Glass: | Silica sand. |
| * Measures: | Diameter 3.93 in.
Height: 2.08 in. |
| * Color : | Natural. |
| * Structure: | ABS. |

Volumes, dimensions, and other measures are nominal and may vary by approximately 2%.