

A leader doesn't follow steps, **he marks the way.**



## WHAT'S AN ALUMINUM PAVEMENT MARKER?

A lane marker specially developed to effectively delineate roads or as a speed hump for pedestrian crossings.

Specially suitable as a speed hump.

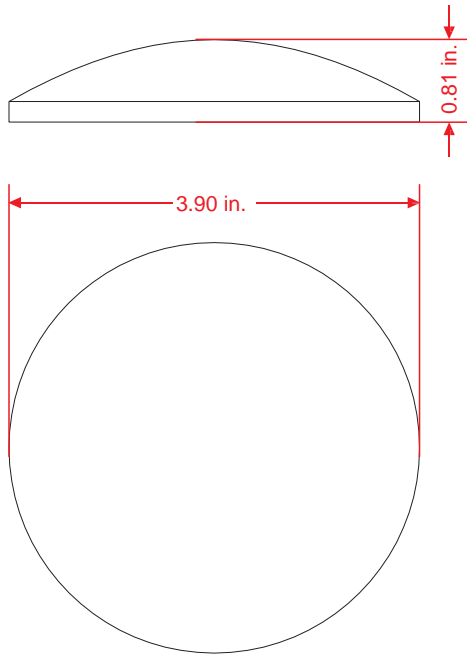
Ideal in pedestrian zones, crossings, turnouts, and delimiting parking spaces.

## Features

- Three times lighter than a steel pavement marker but with the same resistance.
- Useful to forecast and channel vehicles to other safety areas or the vicinities of dangerous zones like bridges, tunnels, slopes, or curves.
- High strength to impacts and friction from the tires of vehicles and trucks.
- It has abrasion resistance.
- The body doesn't deform and it's molded with aluminum in one piece.
- Easy to install on any kind of road surface (asphalt or concrete).
- Optional bolt for better grip on the floor.
- It has the perfect height because it doesn't alter vehicle traffic.
- Natural color.



Volumes, dimensions, and other measures are nominal and may vary by approximately 2%.



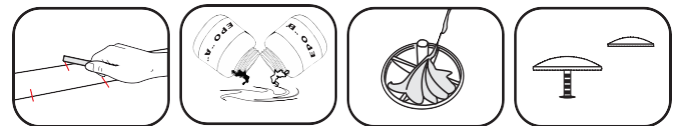
## Measures

<b>Material:</b>	A380 Aluminum.
<b>Measures:</b>	Diameter: 3.90 in. Height: 0.81 in.
<b>Color:</b>	Natural.
<b>Approx. weight:</b>	4.62 oz

## Installation.

The installation is done by hand, usually with epoxy glue. (optional).

- 1.- The surface needs to be dry and clean. Mark the pavement marker distribution (we recommend every 10 in. in staggered formation).
- 2.- Apply epoxy glue on the back of the pavement marker. Make sure it's completely covered, especially the corners (approx. 3.5 oz).
- 4.- Put the pavement marker and press it. It doesn't matter if the glue pours out.
- 4.- In the case of having a bolt bore into a hole with a 1/2" drill bit to a depth of 3". Remove the excessive dust and return to step 2.
- 5.- Let it dry for approximately 2 h.



### NOTE:

#### EPOXY GLUE PREPARATION

MIX EQUAL AMOUNTS OF THE "A" AND "B" FORMULAS.

STIR UNTIL THE FORMULAS ARE WELL COMBINED.

SINCE YOU CAN ONLY USE IT ONCE, GET RID OF THE REMAINING EPOXY GLUE ONCE THE JOB IS FINISHED.

