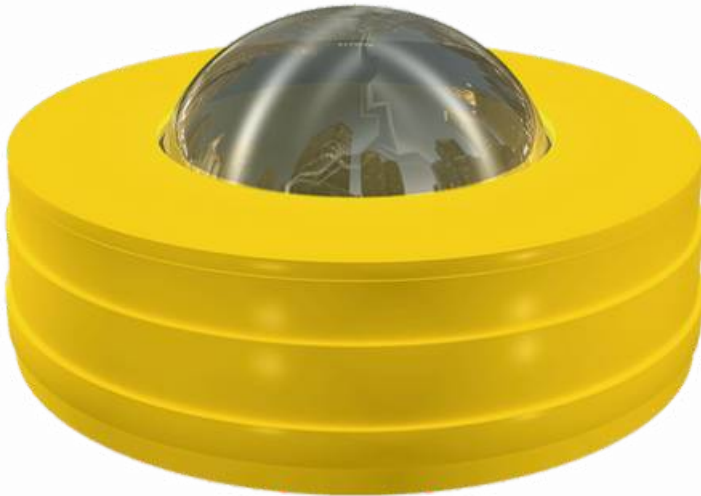


True leaders do not follow  
...they lead the way

## WHAT IS A GLASS ROAD STUD?

Used on roads and public streets, horizontal road studs indicate traffic direction, delimit dangerous or restricted areas, and help drivers stay in their lanes.

Road studs are widely used in construction zones, temporary diversions, and bike lanes, serving as an essential tool for safer and more efficient traffic flow.

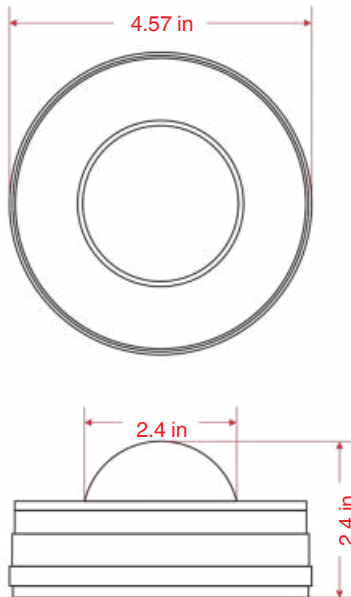


## Features

- A basic and cost-effective road stud.
- Features a durable, deformation-resistant structure.
- Resistant to friction, abrasion, and impacts.
- Ensures high visibility both day and night due to its size and color.
- Adaptable to all types of pavement.
- Manufactured from yellow ABS with a silicon glass bead.
- The clear bead has a metallic backing for full 360° reflection.
- Tempered glass ensures safety by breaking into tiny, harmless fragments if damaged.
- Easy to embed in concrete during installation.



Dimensions and other measurements are nominal and may vary by  $\pm 2\%$



## Dimensions

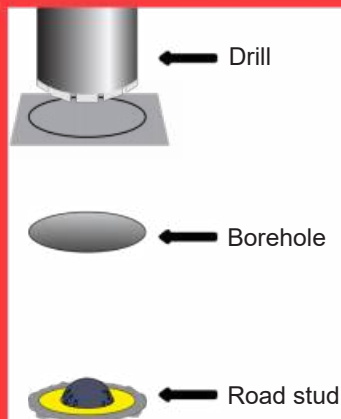
- **Structure material:** Yellow ABS
- **Bead:** Thermally tempered silicon glass
- **Finish color:** Natural
- **Overall dimensions:** Diameter: 4.57 in, Height: 2.4 in
- **Density:** 2.5 g/cm<sup>3</sup>
- **Softening point:** Approximately 1,346°F
- **Thermal conductivity:** 1.05 W/mK
- **Hardness:** 6–7 on Mohs scale
- **Poisson's ratio:** 0.22–0.23
- **Compressive strength:** >980.7 MPa
- **Working modulus:** 49.03 MPa
- **Rupture modulus:** 83.86 MPa
- **Tensile strength:** 29.42 and 68.65 MPa



## Anchoring



First, clean and prepare the surface.  
Mark the layout for each road stud.  
With a hole punch, drill  $\varnothing 4\frac{1}{2}$  inches in boreholes  $1\frac{1}{2}$  inches deep and clean out any debris.  
Apply epoxy adhesive inside the hole.  
Insert the road stud and press it down until flush with the asphalt—extra adhesive is okay as it ensures better adhesion.  
Installation complete.



## EPOXY RESIN MIXING INSTRUCTIONS

- Mix equal amounts of formula "A" and "B" until the mixture is uniform.
- After completing the work, discard any leftover epoxy resin, since it is intended for one-time use only.