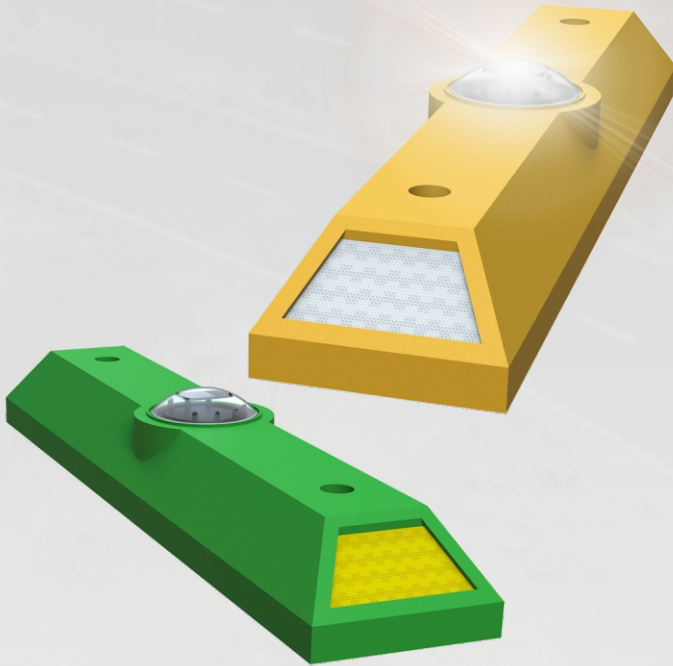


A leader doesn't follow steps  
... he marks the way



## WHAT IS THE CHANNELER 81L?

Marker device special for dedicated lanes.

## WHAT IS FOR CHANNELER 81L?

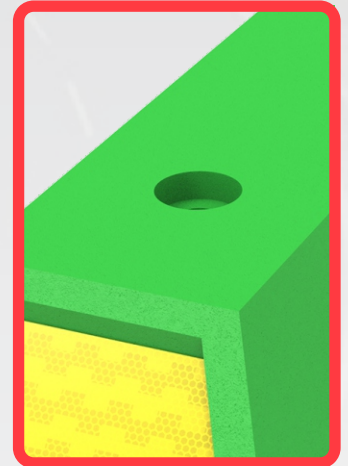
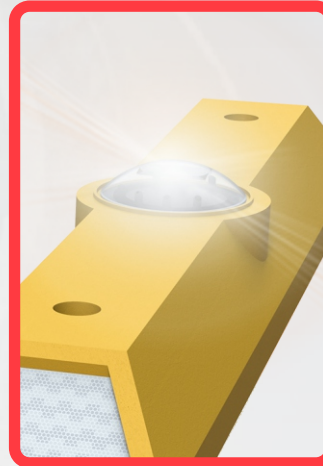
Perfect to limit and confine bicycle protected lanes and to guide traffic in a well planned manner.

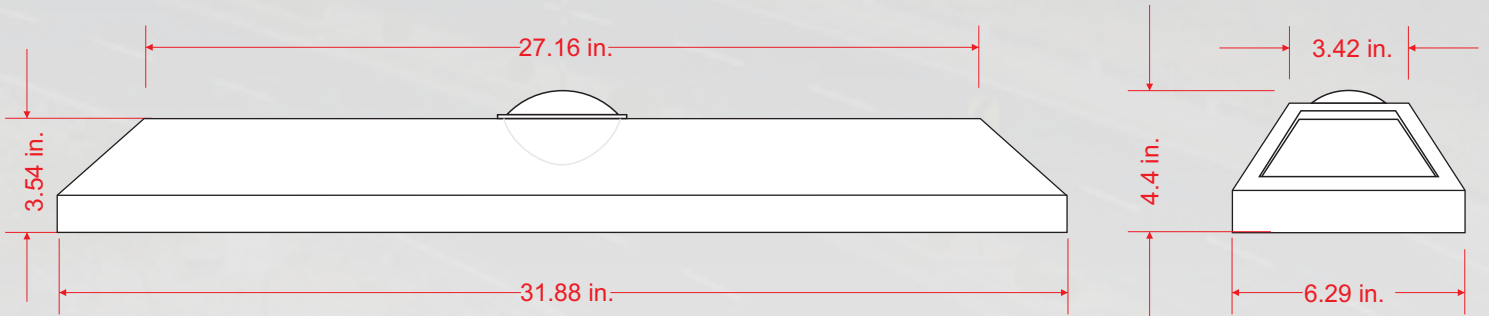
## RECOMMENDED USES

Used for channelize traffic in an organized and correct way inside special lanes.

## FEATURES

- Made out in medium density polyethylene, in one solid piece with two augers for install.
- Line colors: yellow, green and black.
- Rounded edges bring safety without harm vehicles, persons or animals.
- Extended durability made out for heavy traffic vehicles.
- Great visibility thanks to its reflectives on both extremes.
- Its design allows easy stacking saving in transport costs.
- In addition, the solar cat-eye in the middle makes it visible over long distances.
- Its flashing illumination system with two ultrabright leds amber color has a life of 100,000 hrs with an intensity of 6500 milicandels.
- Easy to install and easy to change to next position.
- Install with two drowned anchors plus epoxic resine for a maximum fixation.





**Measure**

**Total**

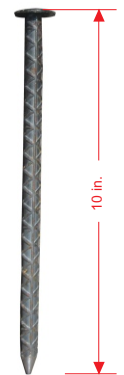
Length: 31.88 in.  
Width: 6.29 in.  
Height: 3.54 in.  
Height with light: 4.4 in.

**Reflective:**

Amber, white and red



Must use  
epoxic  
glue



**Anchorage in asphalt**  
Steel nail  
(1/2" x 10 in.)