

A leader doesn't follow steps  
... he marks the way



## WHAT'S A SPEED HUMP?

They are devices placed over the asphalt surface whose purpose it's to maintain the traffic speed reduced throughout specific sections of the road.

Its main function is to reduce the motorist's speed.

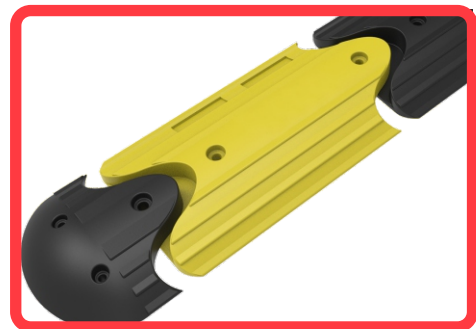
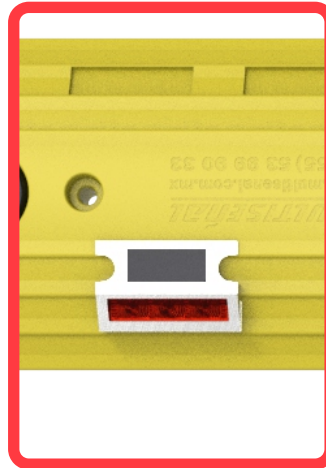
It's mostly recommended in pedestrian crossings, schools, hospitals, or places where it's necessary to reduce the speed.

## Features

- The applied technology in the manufacture of the Speed hump RDV-45 is of the highest specification, not only in its design but also in the materials. This is why it complies superbly with its purpose being highly resistant and of great duration.
- It adapts to desired lengths thanks to its modularization.
- Its dynamic form makes it a user-friendly speed hump with the city.
- Male-female assembly with end caps on each side..
- Made of polyethylene, a material that doesn't damage vehicles.
- Each piece is manufactured in solid colors thus ensuring that it never discolors. Colors: Black and yellow of great duration.
- Ideal to replace concrete speed bumps.
- Another feature of the RDV-45 is that it has the option of adding light.
- The speed hump with light is made up of LED studs. This helps the driver with improved visibility at night.
- Easy to install. You will need steel anchors (not included).

### SOLAR STUD FEATURES

- A stud with a smart solar power system.
- Solar panel and high-efficiency electric system.
- Translucent amber and blue LEDs with an operational angle of 30 degrees.
- Flash frequency of 3 Hz.

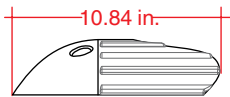


Volumes, dimensions, and other measures are nominal and may vary by approximately 2 %.

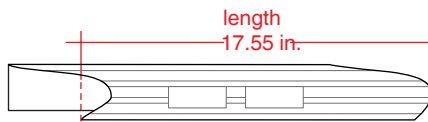
## Measures

<b>Made of:</b>	High-density polyethylene.	
<b>Dimensions:</b>		<b>Approx. weight:</b>
Female end cap:	10.84 in.	3.08 lb.
Middle section:	22 in.	7.06 lb.
Male end cap:	6.43 in.	2.73 lb.
Length:	11.70 in.	
Height:	2.14 in.	
Pressure resistance:	26,400 lb. x in <sup>2</sup> .	
Colors:	Black and yellow.	

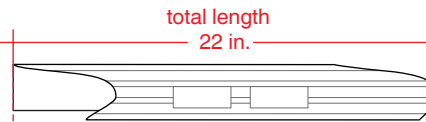
### FRONTAL VIEW



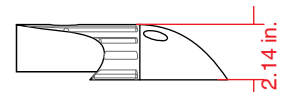
Female end cap



Module 1 yellow

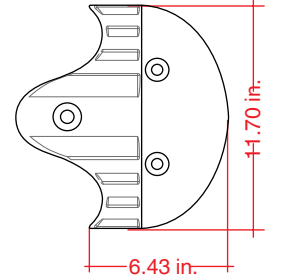
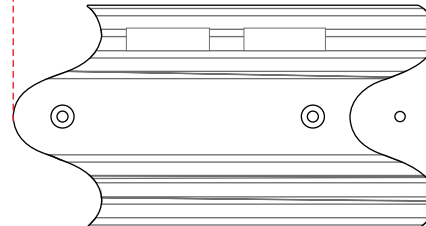
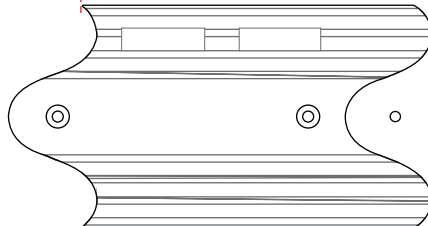
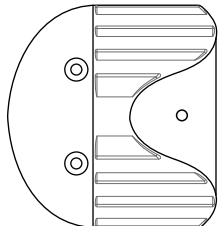


Module 2 black



Male end cap

### TOP VIEW



Measures: in.



### anchor

The speed hump will act as a template. Mark all the holes with a drill and a 1/2" drill bit. Then, bore into the marked area at a depth of 10".

Assemble the speed hump and put the anchors. Hammer away with the help of a 6 lb. mallet.

*Note:* To achieve a better fastening, evenly spread epoxy glue on the anchors.

