

A leader doesn't follow steps
... he marks the way



WHAT'S A ROLL DEFENDER?

A revolutionary damping and containment system for vehicles on low-speed roads, different routes, and high-performance highways.

ROLL DEFENDER RDS-267



ROLL DEFENDER RDD-267

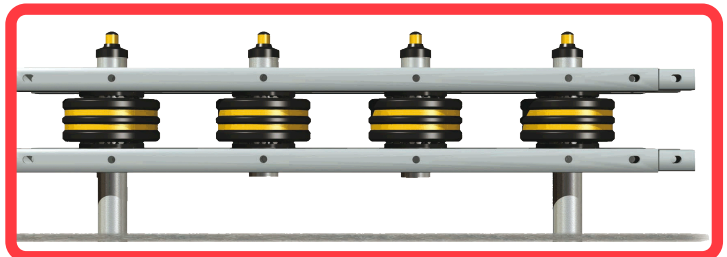


ROLL DEFENDER RDT-267

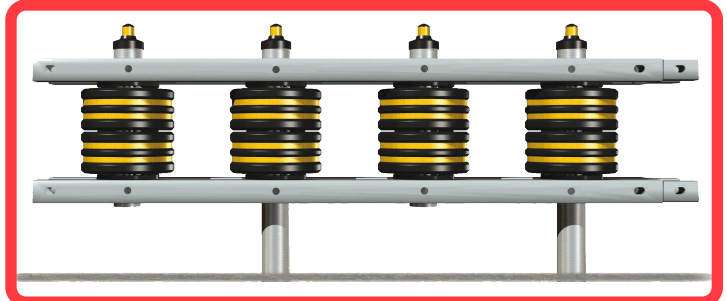


FEATURES

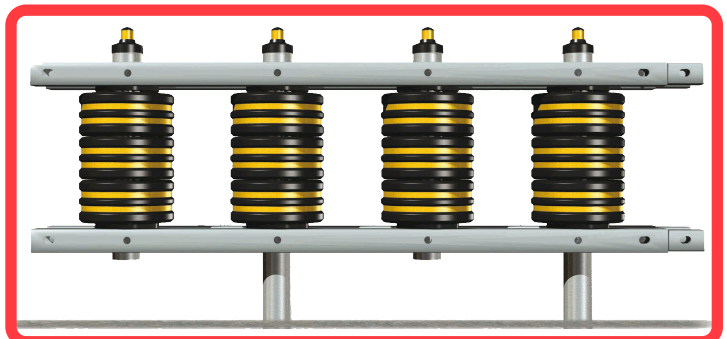
- A system that absorbs the impact force of vehicles through a controlled rotation of a series of automatic braking rollers. These also redirect the vehicle to the road. Using this system saves lives and diminishes damage on high and low-speed highways.
- A state-of-the-art engineering and design.
- Weather-resistant and extreme temperatures resistant.
- High intensity reflective stripes.
- You can add an impact attenuator of new generation at the starting end of the Roller Defender (optional) and a flexible cushioning (Vitemflex® plates) or a steel structure support assembled on 5 polyurethane impact attenuators (also optional).
- The roller barrier can have as far as three different protections according to the safety level required at every point of risk on your highway.



Simple Roll Defender: One row for low-speed roads.



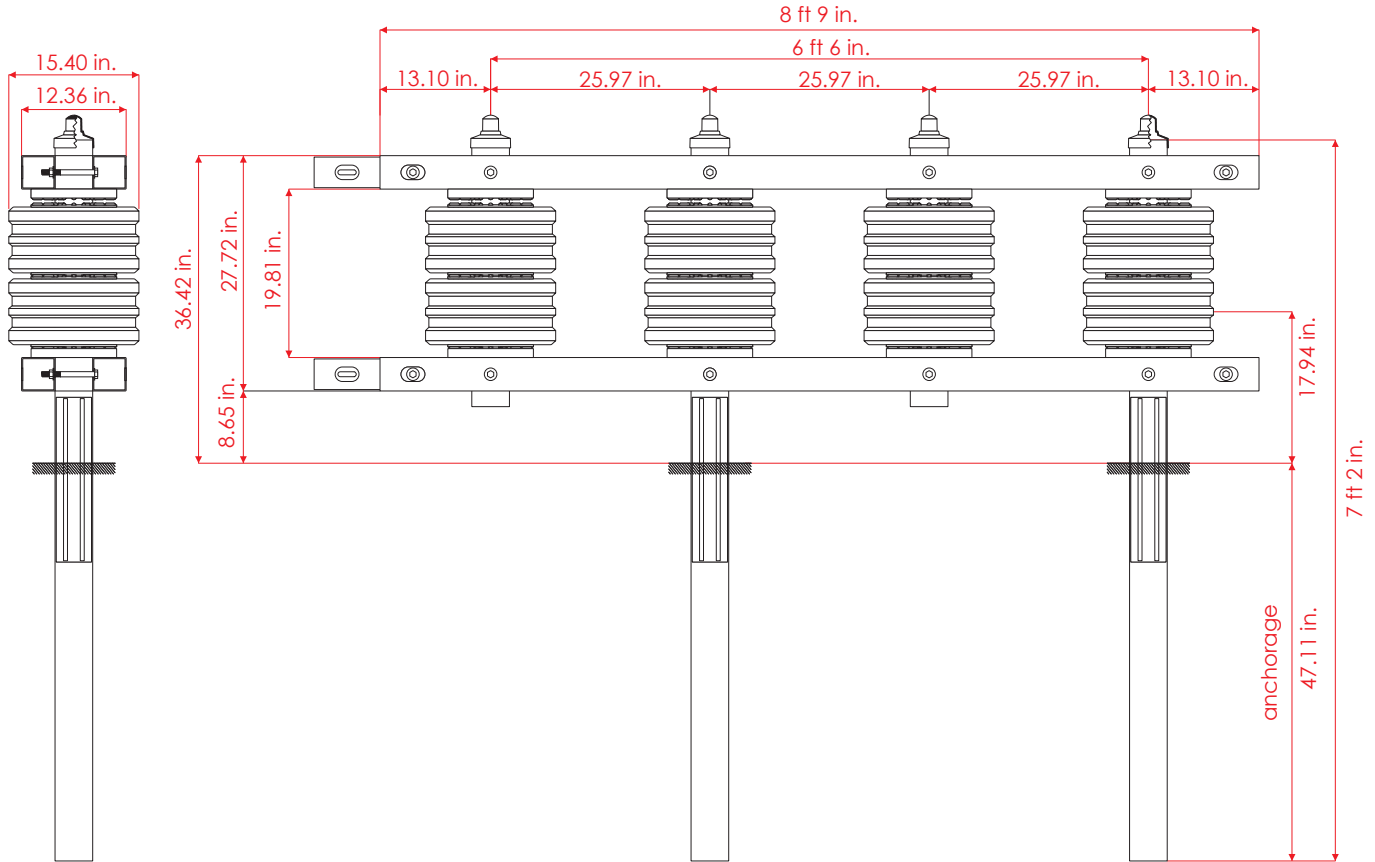
Double Roll Defender: Two rows for high-speed roads.



Triple Roll Defender: Three rows for traffic of heavy-duty vehicles.

Volumes, dimensions, and other measures are nominal and may vary by approximately 2 %.

Measures: in.



FRONT VIEW

SIDE VIEW

Technical specifications

Made of:	SHS of 4" × 4", Structural tube SKD 30, Ø 4.5".
Steel treatment:	Hot-dip galvanization.
Rims:	L.P.D. Flex.
Rollers:	L.D.P. Flex. (Ø 15.55 in. Height 8.66 in.)
Brakes:	2 by axle, superior and inferior brakes.
Post cap material:	L.D.P. Flex. (Ø 4.72 in. Height 3.66 in.)
Reflectives:	High Intensity Grade.
Anchorage for reinforced posts:	Polymeric concrete and 3/8" steel rods.
Assembly:	5/8" galvanized screws.
Curve route measures:	Sections of 8 ft 9 in.
Straight route measures:	Sections of 19 ft 8 in.
Impact attenuator (optional):	Vitemflex® cushion plates.

