

A leader doesn't follow
... marks the way

WHAT A CH DITCH COVER IS?

Device set on asphalt surface which aim is connect spaces, also function as a bump.

WHAT IS IT USED FOR?

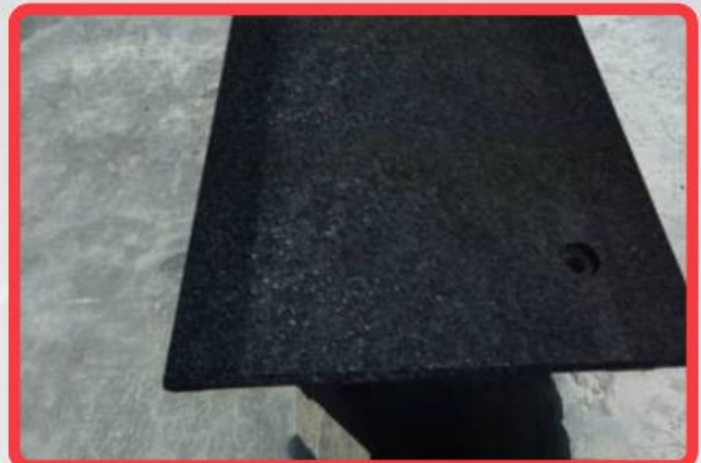
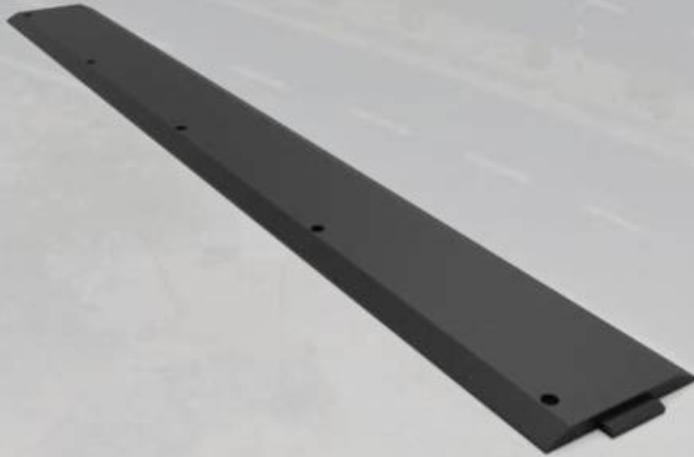
The main function is to close small gaps.

Applications

This device is a variation on pavement that crosses from side to side.

Features

- Speed bump manufactured in medium density polyethylene.
- High resistance to strong shocks and impacts, due is completely thick, withstands up to 2.5 tons.
- Components don't damage environment, in addition, make them immune.
- UV protection.
- It does not breaks, cracks, neither rusts, is 100% waterproof, resistant to alcohol, solvents, environmental temperature changes, flexible and totally recyclable.
- It doesn't need special treatments neither coats, easy to clean of any residual.
- Wear and tear is almost imperceptible, it can be maintained in excellent conditions of use for a very long time in inclemency, humidity, saline or acid conditions.
- Easy to transport thanks to shape and weight.
- Easy (male-female assembly) until achieved the desired length.
- 5 boreholes for an easy installation.



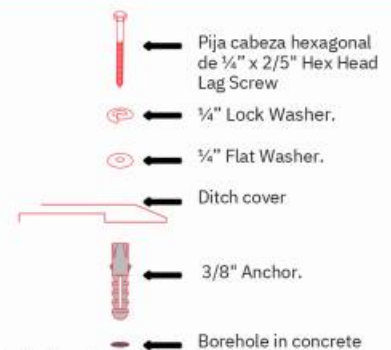
Dimensions and other measures are nominal and may vary by +/- 2%.



Measures

Dimensions: Length: 78.7 in, Width: 11.8 in
Height: 0.9 in

Anchoring



- Mark the boreholes where the device will be placed (use device as a template) with a 3/8" drill bit for concrete.
 - Drill the assigned area to a 2/5" depth.
 - Insert anchors in every borehole and set the ditch cover.
 - Put the 1/4" hex head lag screw with the 1/4" washers.
 - Tighten screws with a 7/16" socket wrench.
- DONE!**