

We are
on the next level!

MORE THAN A SOLAR TRAFFIC DRUM

1 ultrabright LED of latest generation makes of this device a conspicuous one.

Thanks to intensification of LED can be seen from long distances, the solar traffic drum has a synchronized light system which allows to light together with a maximum distance of 131 ft among elements; if one fails it doesn't affects to sequence.

IP68 electronic waterproof system.

These devices can be set individually or by group, depending on the place needs and the required warning level.

These are particularly useful for traffic flow and reduce risk of accidents by alerting to drivers and pedestrians about possible dangers in roadways, such as bumps, detours or the presence of personnel working on roads.



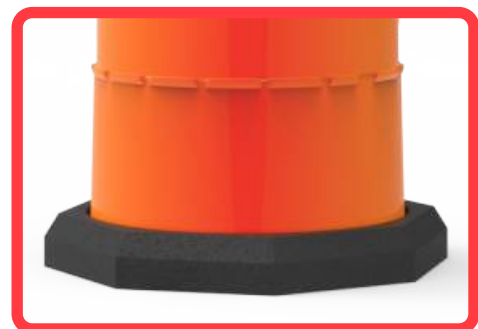
Features

- Generally used to close or channelize vehicle transit in roads due are highly visible thanks to light that flashes.
- Manufactured in polymer in orange or yellow color in a single piece with top grip, that allow a management, making easier its installation.
- Reliefs on body that allow a perfect stacking, without damaging solar cell, and reducing transportation and storage costs.
- Option to include detachable base to add stability by avoiding tilts caused by wind; manufactured in black polymer.

Traffic drums have option to include reflective rings, these can be "A or B" type, as required, improving visibility of device during night or in low light conditions, making easier to identify dangers from a considerable distance.

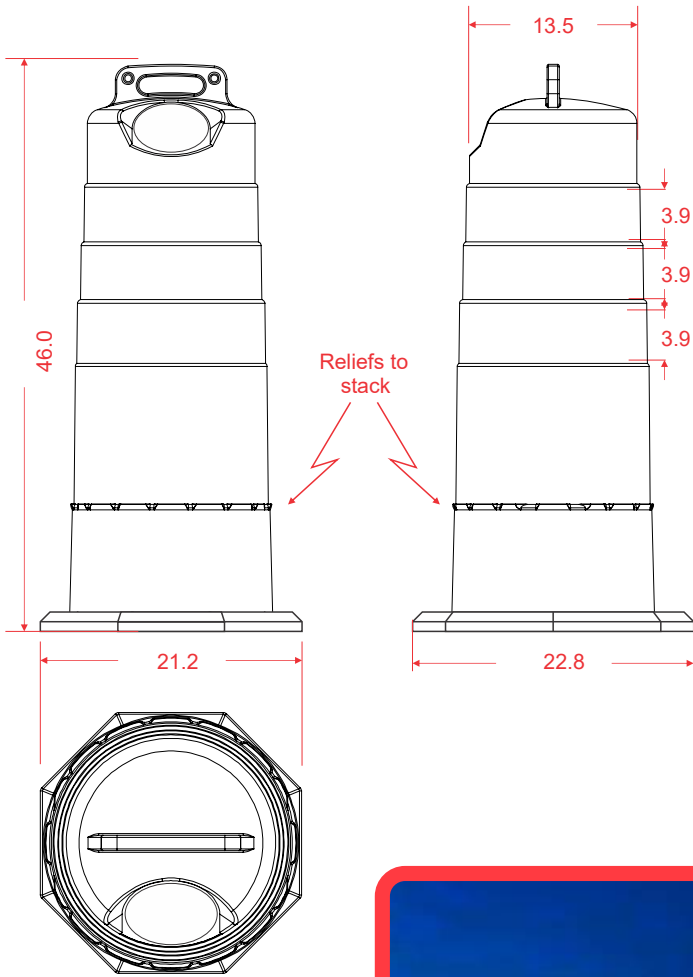
FLASHING LIGHTING SYSTEM

- 1 ultrabright LED of high power in red color.
- Ø150 mm solar cell.
- 2 AAA rechargeable batteries of 1.5 V-1,300 mAh.
- JVM power supply electronic circuit that synchronizes flashing of nearby traffic drums.
- It charges 5 hours and it works for 12 hours.



Images are illustrative

Dimensions and other measures are nominal and may vary by +/- 2%.



Measures	
Traffic drum dimensions:	Top diameter: 13.3 in Lower diameter: 16.9 in Height: 46.0 in
Base:	Length: 22.8 in Width: 21.2 in Height: 1.5 in
Type "A or B" reflective mat, according to requirements:	3.9 in of height, white color (preferably)
Approx. weight of traffic drum:	5.842 lbs
Approx. weight with base:	12.456 lbs



Images are illustrative