

Leader don't follow steps  
 ... marks the way



## WHAT IS THE CHANNELER 81H?

Item for mark special lanes in streets, avenues and roads with clearly ideal height.

## WHAT ARE THE CHANNELER 81H USES?

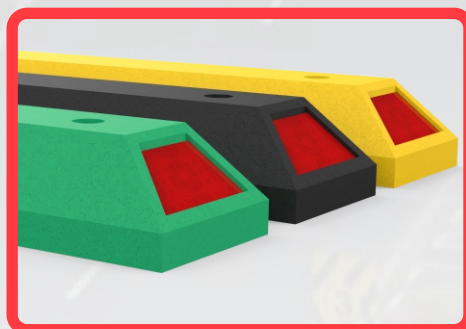
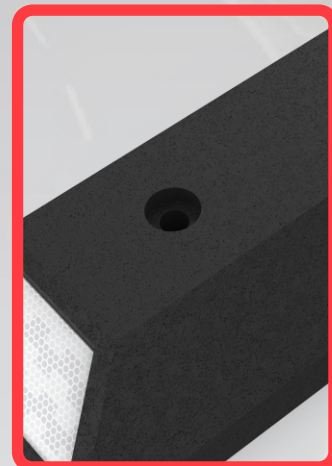
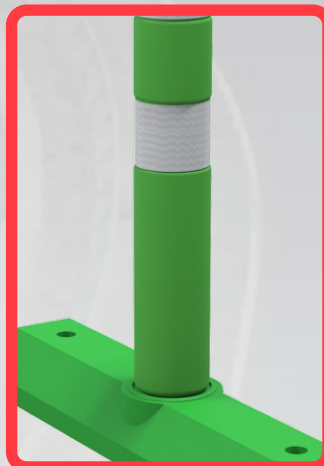
Perfect equipment for limit and circle special lanes with this very visible item.

## RECOMMENDED USES

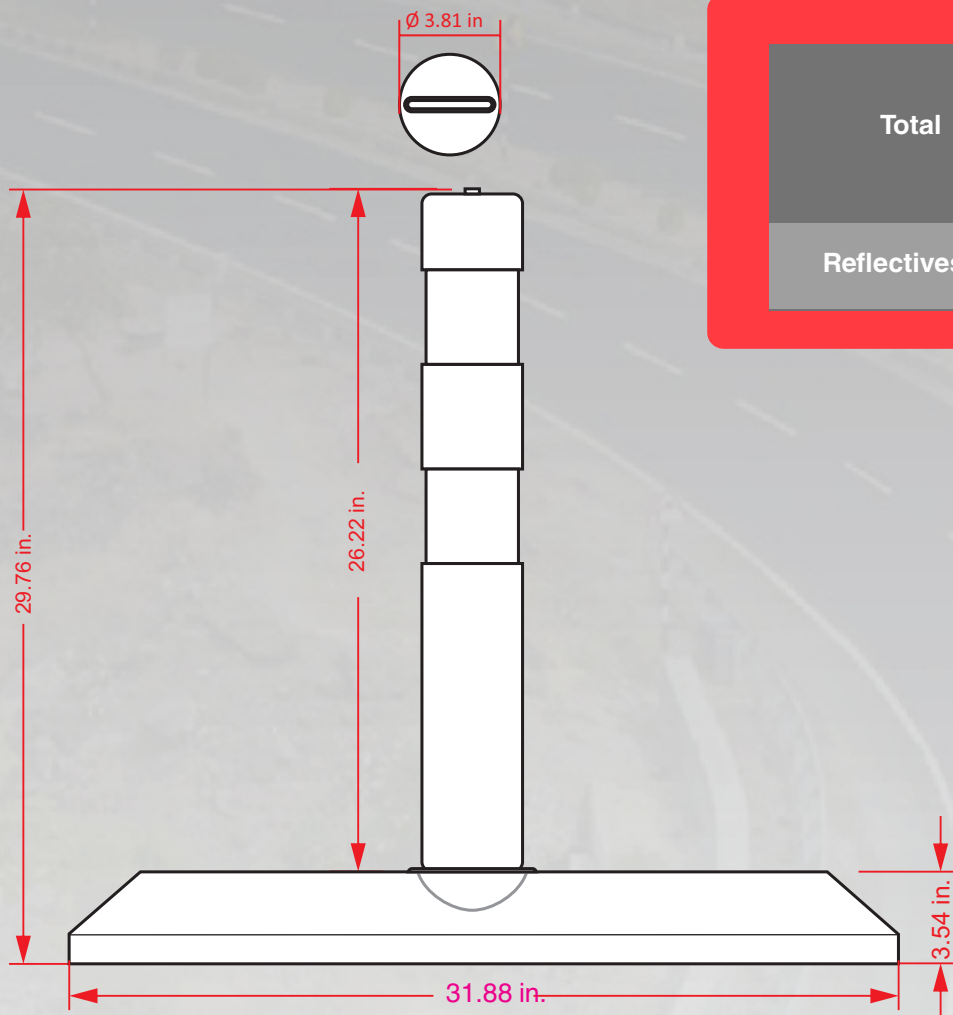
Works perfectly to delimit and confine special lanes like the bicycle protected lanes.

## FEATURES

- Channeler for special lanes to put in counter-flow avenues or in a Bicycle Protected Lane.
- Made out in of medium density polyethylene in a unique piece with two augers for install it.
- In yellow, green or black colors.
- No sharpen edges and rounded ends to get a harmless product in case of impact.
- Two reflectives in both lateral sides make the item very perceptible.
- Its design allows a perfect stack or pile-up for an efficient transport.
- The channeler offer the option to carry atop a post, the Poliflexy® 66 Bollard (code: ITO-PF-66).
- Post color: orange, yellow or green.
- The post option atop provides a perception of safety to users.
- Easy to install and easy to relocation for temporary lanes.
- Installation with two anchors drowned with epoxic glue for better fixing to floor.



Measures are nominal  
and can vary,  
between +- 2%



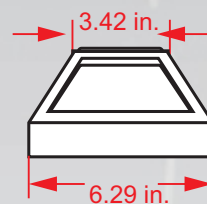
## Measure

### Total

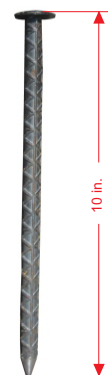
Length: 31.88 in.  
Width: 6.29 in.  
Height: 3.54 in.  
Height with post: 29.76 in.

### Reflectives

Amber, white, red



Must  
use  
epoxic  
glue



**Anchorage in asphalt**  
Steel nail  
(1/2" x 10 in.)